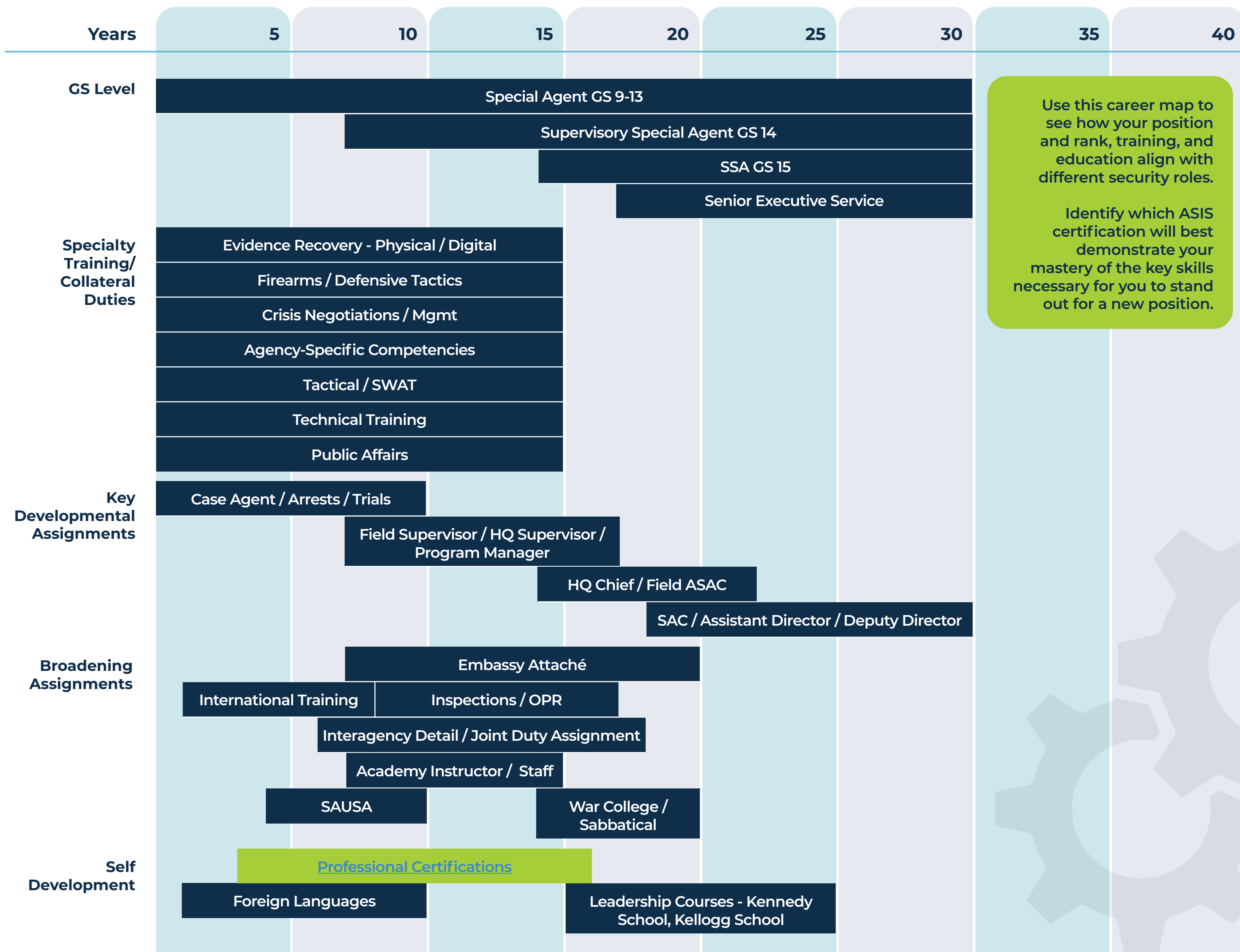
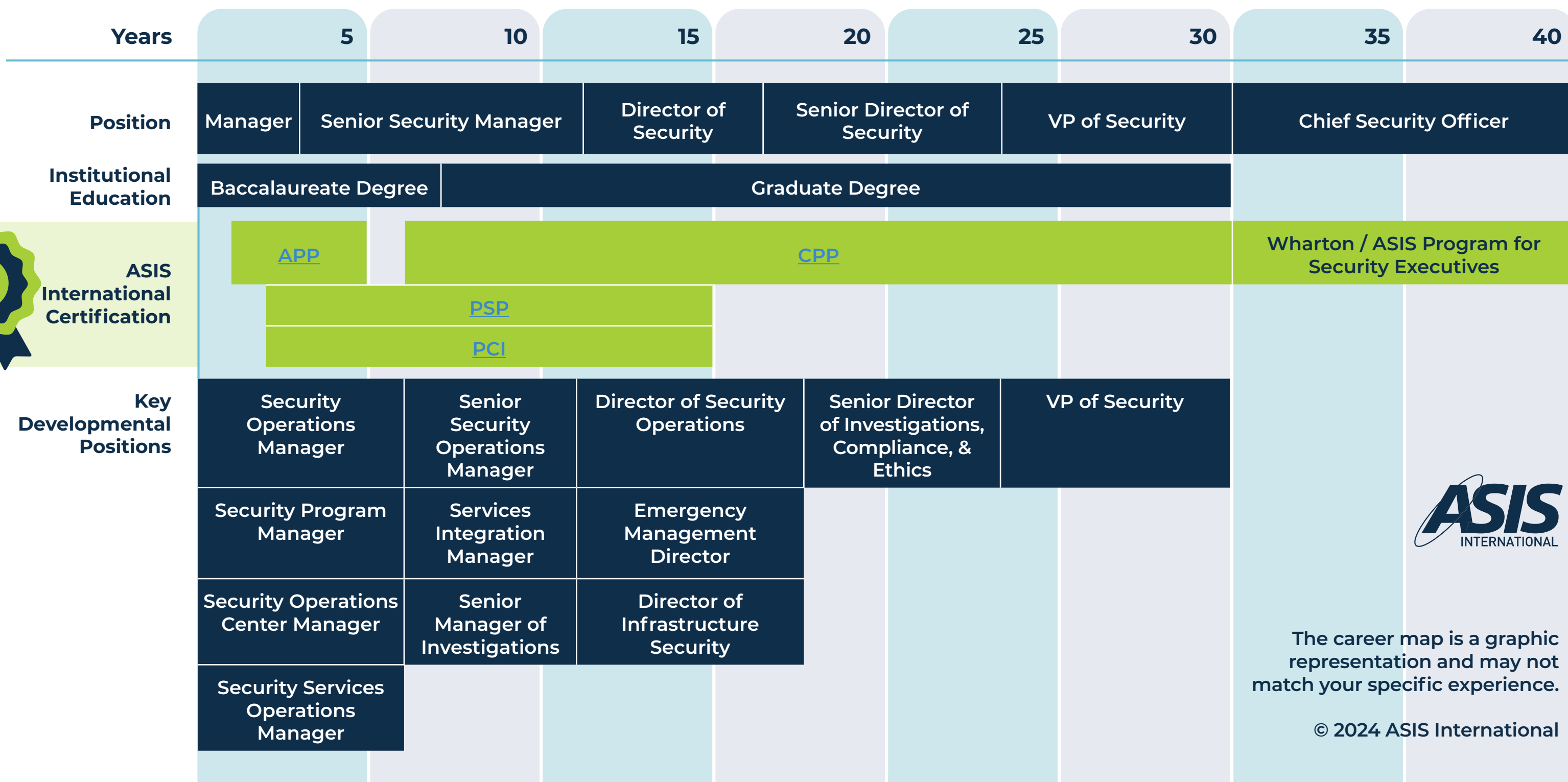


FEDERAL LAW ENFORCEMENT TO CIVILIAN CAREER MAP: INVESTIGATOR

Special Agent-Investigator Career Development



Civilian Security Professional Career Development



LEGEND: FEDERAL LAW ENFORCEMENT INVESTIGATOR

Rank structure (Typical structure - the GS pay levels and terminology used by individual federal agencies may differ slightly)

SA	SA	GS-9 to GS-13
SSA	Supervisory Special Agent / Group Supervisor	GS-14
ASAC	Assistant Special Agent in Charge	GS-15
SAC	Special Agent in Charge	SES
AD	Assistant Director	SES
ADIC	Assistant Director in Charge	SES
EAD	Executive Assistant Director	SES
DD	Deputy Director	SES

Professional Military Education

No established progressive education regimen following initial Special Agent training; specialty training courses are dependent upon availability and / or assignment.

Example Assignments

Special Agent	Case Agent; SWAT Operator; Bomb Technician; Technical Agent; Firearms Instructor
GS-14 Supervisory Special Agent	Squad / Group Supervisor; Headquarters Supervisor; Resident Agent in Charge (RAC); Deputy Country Attaché / Assistant Legal Attaché; Training Academy Instructor
GS-15 Supervisory Special Agent	Assistant Special Agent in Charge; Headquarters Unit Chief; Country Attaché / Legal Attaché; Assistant Inspector
SES	Special Agent in Charge; Assistant Director
