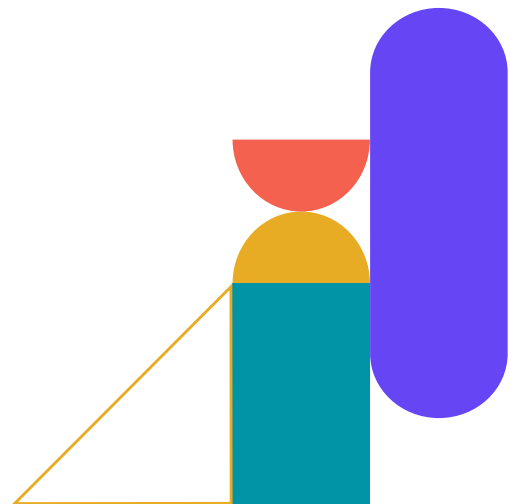
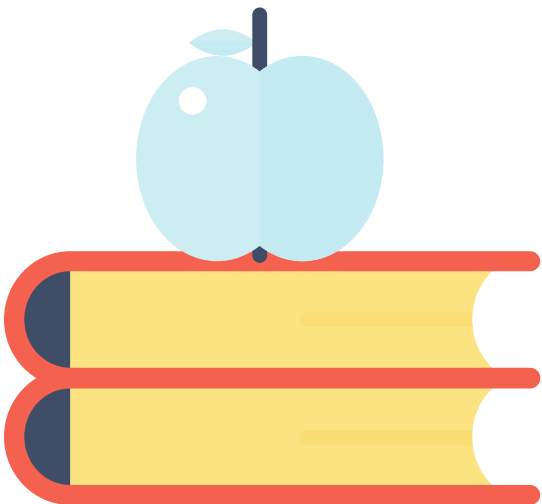


## ASIS Scholarships

Certification	Who should apply?	What experience is needed?
<b>Associate Protection Professional (APP)</b>	<b>Entry-Level</b> security professional	Minimum <b>1 year</b> security experience *Must be an ASIS member in good standing
<b>Physical Security Professional (PSP)</b>	<b>Mid-Level</b> security professional	<b>3-5 years</b> physical security experience *Must be an ASIS member in good standing
<b>Professional Certified Investigator (PCI)</b>	<b>Mid-Level</b> security professional	<b>3-5 years</b> investigative experience Minimum <b>2 years</b> case management experience *Must be an ASIS member in good standing
<b>Certified Protection Professional (CPP)</b>	<b>Senior-Level</b> security manager	<b>5-7 years</b> security experience Minimum <b>3 years</b> management experience *Must be an ASIS member in good standing



## Foundation Supported Scholarships

Scholarship	Who should apply?
<b>IE Business School</b>	<b>Senior Security Executives</b> (corporate and information) who want to develop and enhance their business acumen  *Must be an ASIS member in good standing
<b>Global Military and Veterans Certification Scholarship (MVC)</b>	<b>Active-duty, reserve, and National Guard military members</b>  *Must be an ASIS member in good standing
<b>Law Enforcement Liaison Certification Scholarships</b>	<b>Active-duty law enforcement</b>  *Must be an ASIS member in good standing

## IFPO Scholarships

Certification	Who should apply?	What experience is needed?
<b>Certified Protection Officer (CPO)</b>	<b>Entry-Level</b> security officer	Minimum <b>6 months full time</b> security officer experience or <b>1 year part time</b> security officer experience  *Students enrolled in a qualified training program may qualify
<b>Certified in Security Supervision &amp; Management (CSSM)</b>	<b>Entry to Mid-Level</b> security professional	Minimum <b>2 years</b> security experience  Minimum <b>6 months</b> supervisory experience

