

# Försäkringskassan

(Swedish Social Security Agency)

# Håkan Hagberg

---

- Internal investigations
- Computer analyses
- Identify frauds against Försäkringskassan

# Agenda

---

- Short summary of the Swedish Social Insurance Agency
- Why computer analysis? (Hint...fraud of € 3 million)
- Computer analysis and internal investigations
- Example of analysis and fraud detection
- Benefits with Computer Analysis
- Q & A

# Short summary of the Swedish Social Insurance Agency

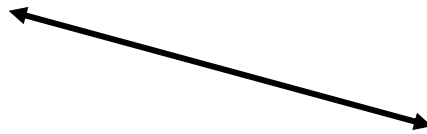
---

## Government Structure



***Parliament and  
government***

**Legislates (laws  
and ordinances)**



**Försäkringskassan**

***Government agency  
Service to the  
public***

# Försäkringskassan

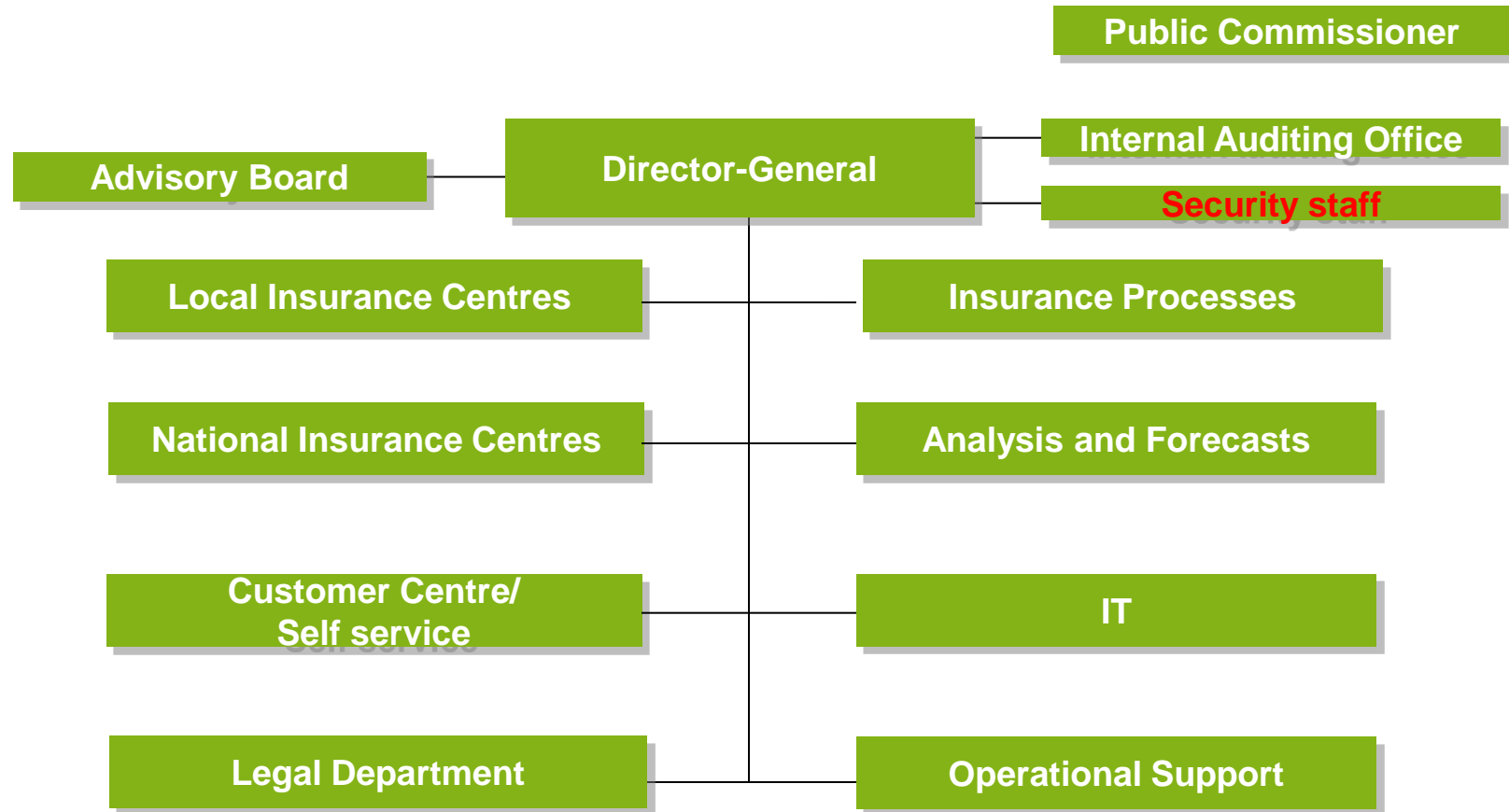
## - Social Insurance Agency

---

- 54 million payments per year (including pensions) totalling approx. € 40 billion
- 300 offices
- Around 12,800 employees



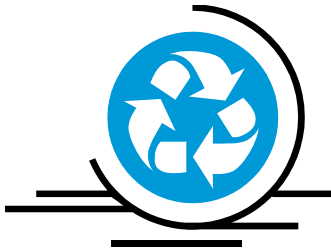
# Organisation



# Security and environmental staff

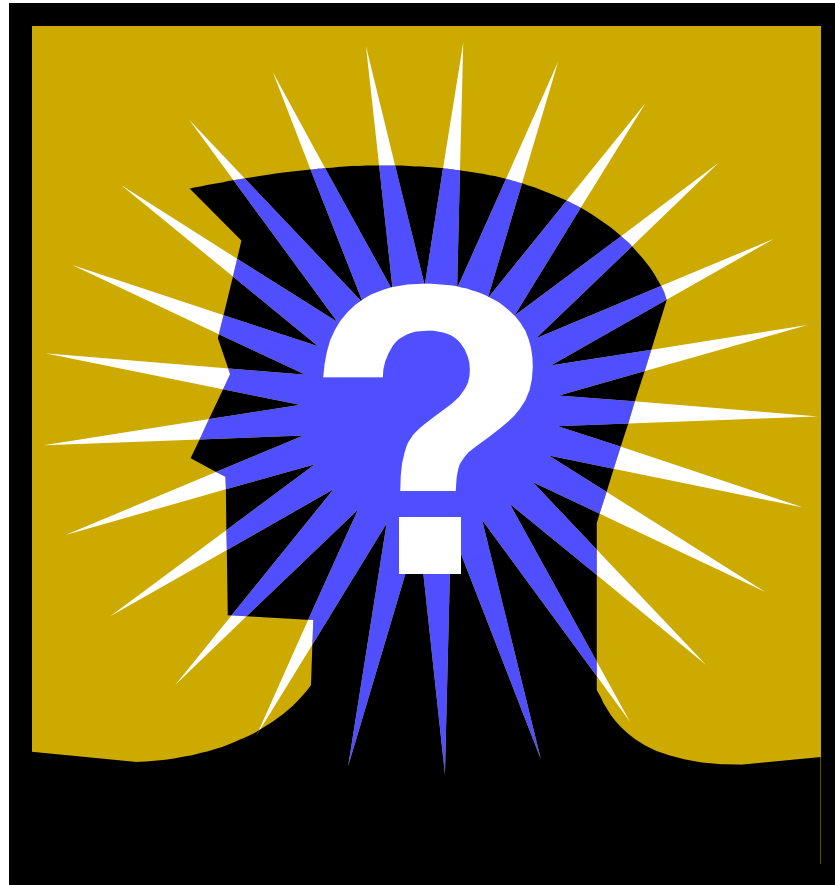
---

Director of Security and 13 co-workers at three locations



# Computer analysis and internal investigations

---





# Why computer analysis?

---

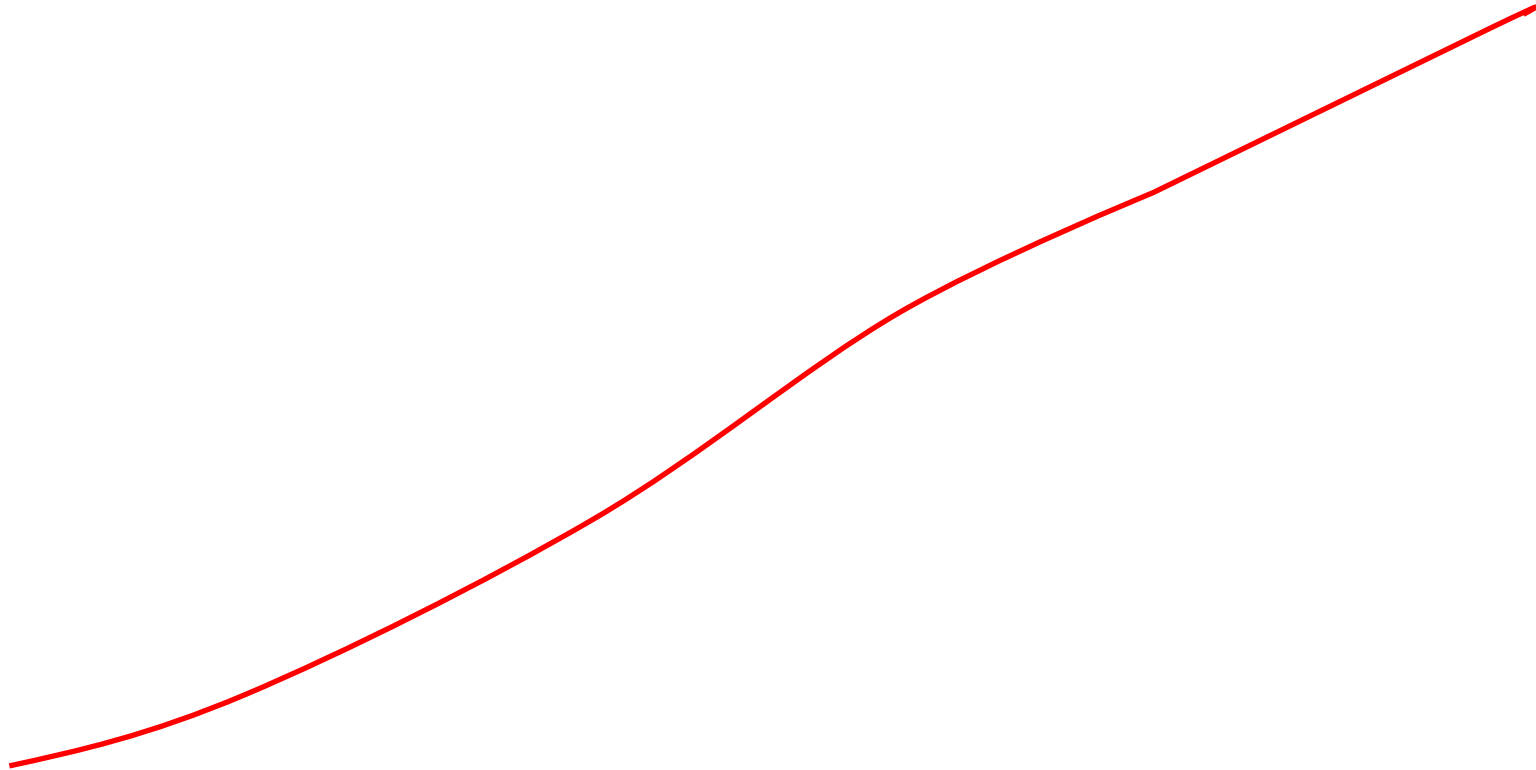
**2007**

**2009**

**2013**

# Fraud tendency

---



# Computer analysis at Försäkringskassan

---

Staff comprises 7 people, 4 analysts and 3 investigators.

# Activities to strengthen Försäkringskassan credibility

---

## Systematic control of

- Payments to insured
- Users transaction in systems

## And

- Inform employees of the consequences if rules are violated

# Clients of computer analysis

---

## External

- The pension authority

## Internal

- HR department
- Local security
- Finance staff
- Administration of access rights

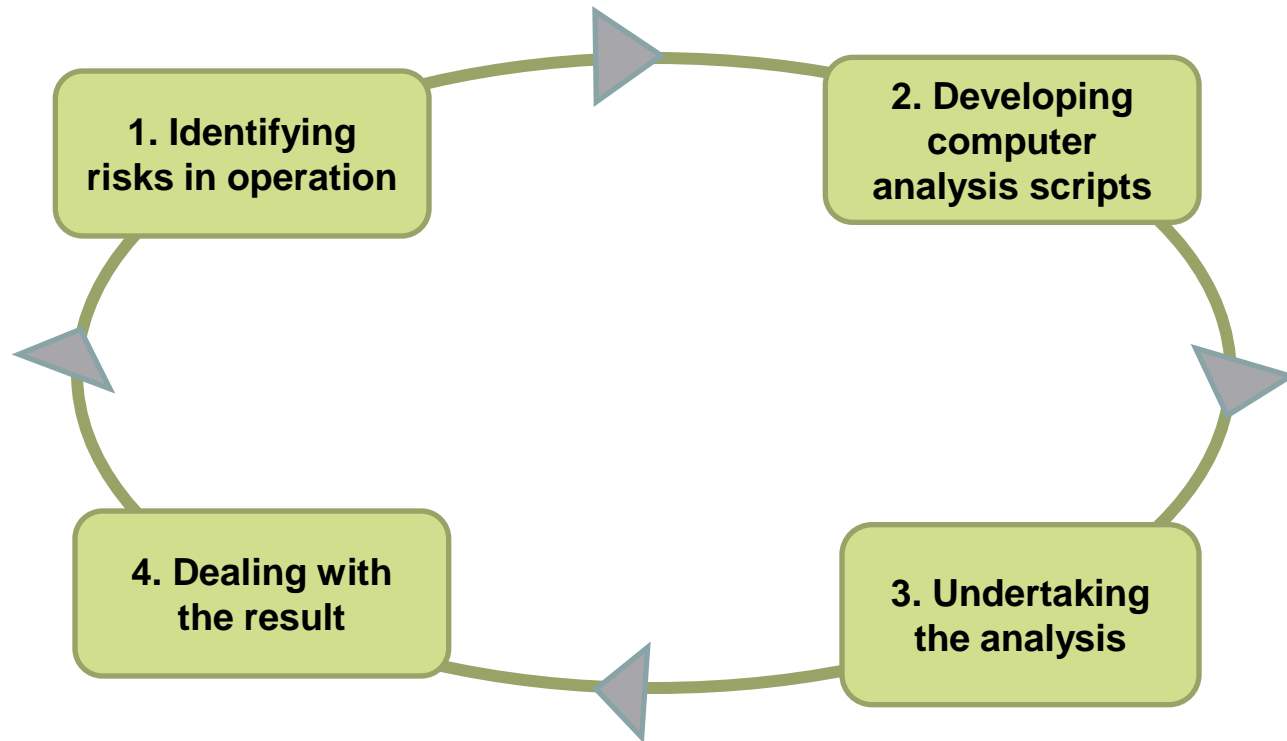
# Two different types of computer analysis

---

- Targeted computer analysis
  
  
  
  
  
  
  
  
  
  
- Investigative computer analysis

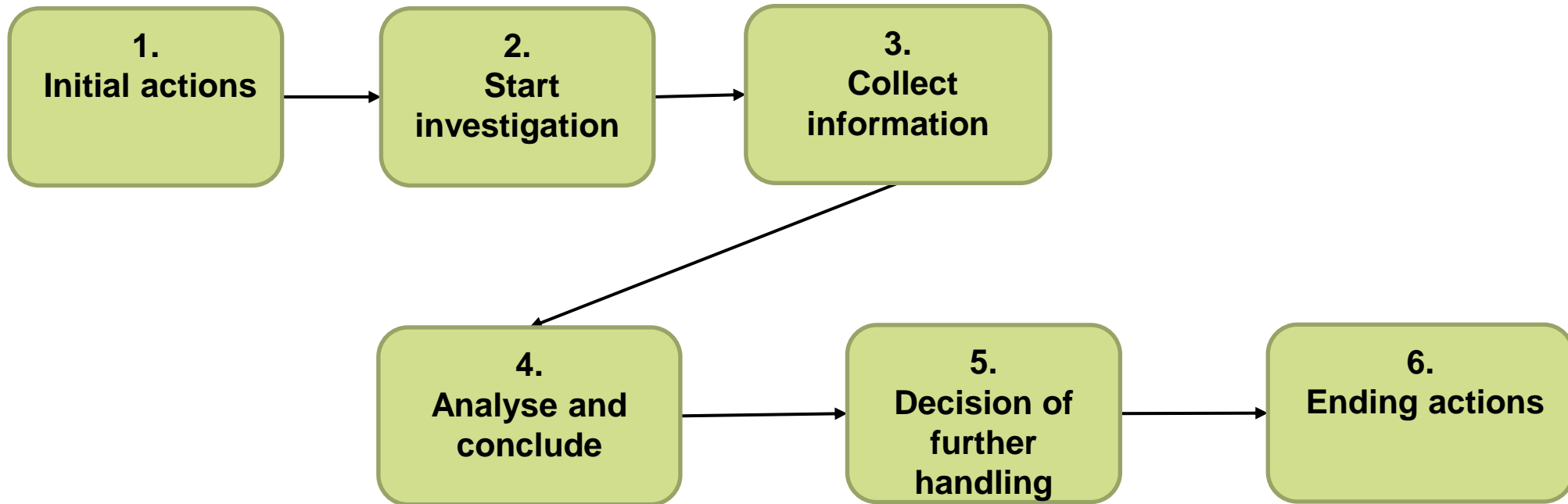
# Computer analysis work method

---



# Process of internal investigations

---





# Information to use

---

- System logs
- Payments info
- Insurance info
- Info from case handler
- Tip from the public
- Access logs

# On going Investigative analyses

---

600 000 administrative  
pay outs

150 internal  
investigations

12 800  
monthly salary

2000 employee loggs

54 millions  
insurance pay outs

One project a year to  
examine an insurance

# An actual case

# What is attendance allowance?

---

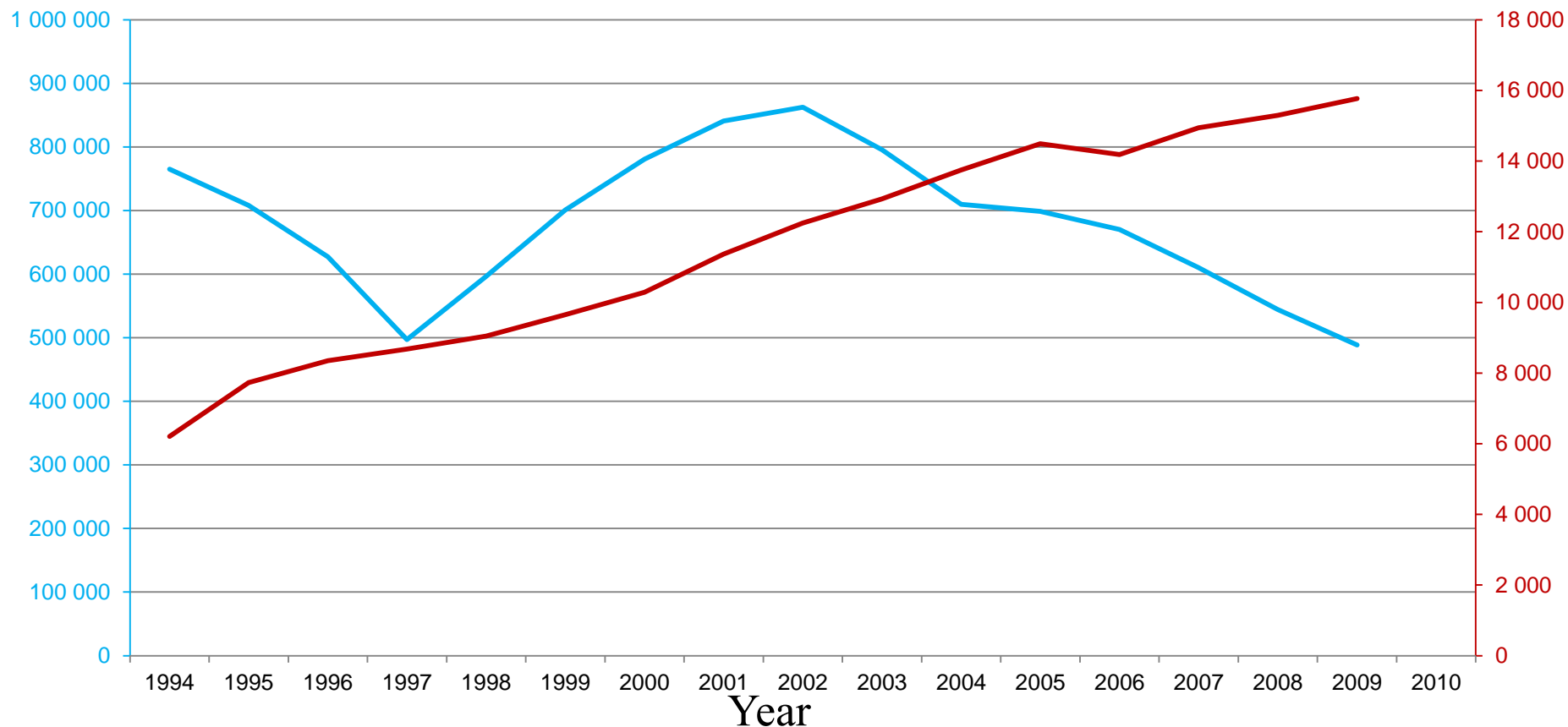


# Example of an Operation

## -Attendance allowance

Number in sickness  
relive

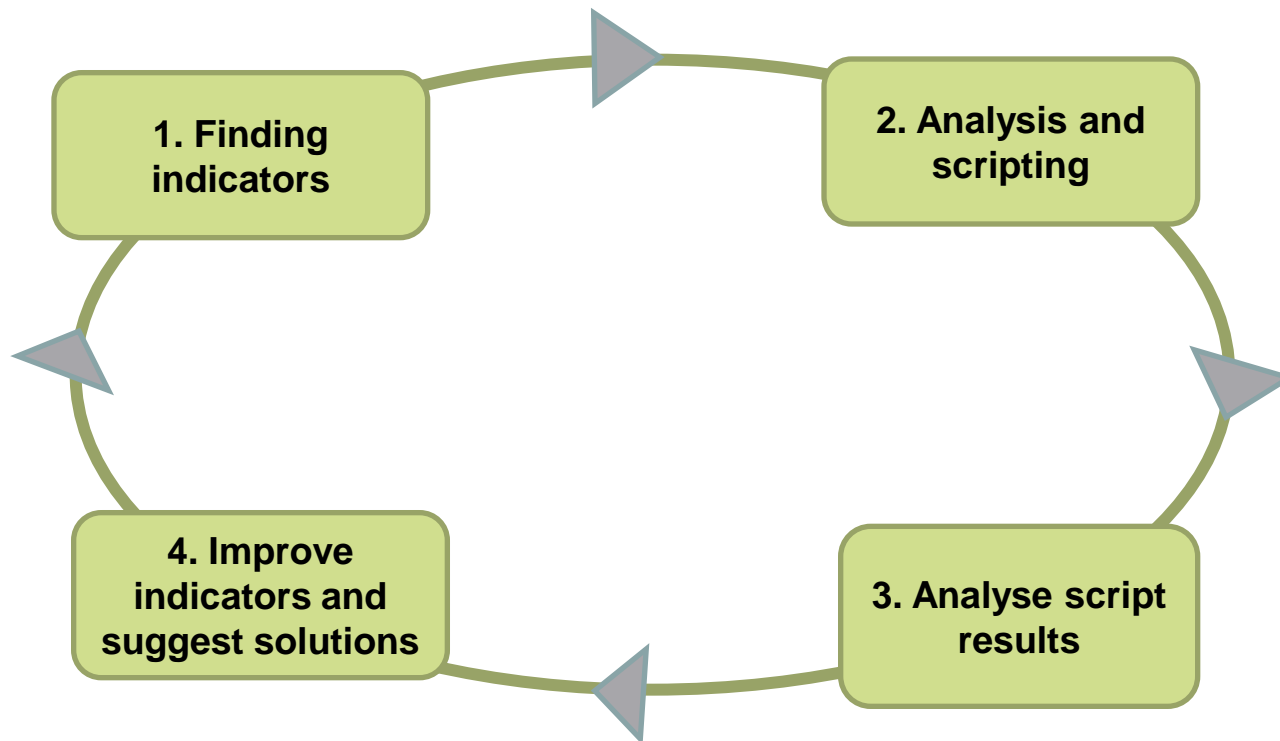
Number in attendance  
allowance



# Example of an Operation

## -Attendance allowance

“Identify and report suspect payments within the attendance allowance locally”



# Example of an Operation

## -Attendance allowance

---

### Findings

- Large amounts
- Money leaving Sweden
- Feeding criminal organisations

# Result of the Case

---

- € 2-300 m in suspect frauds
- 30 full time investigators, prosecutors, tax specialists and police
- 25 company is investigated, more to come
- 500 suspect so far
- Court negotiations a mass during 2013
- Excepted convictions on all suspects!



# Summary

# Dealing with the findings

---

- Suggestions for legislators.
- Suggestions to change some parts of the case handling
- Investigation and police reports to stop the ongoing frauds
- Spill-over information that can be used to do other types of computer analysis
- Identified efficiency potential.
- Greater confidence in the agency from citizens, the government and inspection agencies.

# Questions?