

Table of Contents

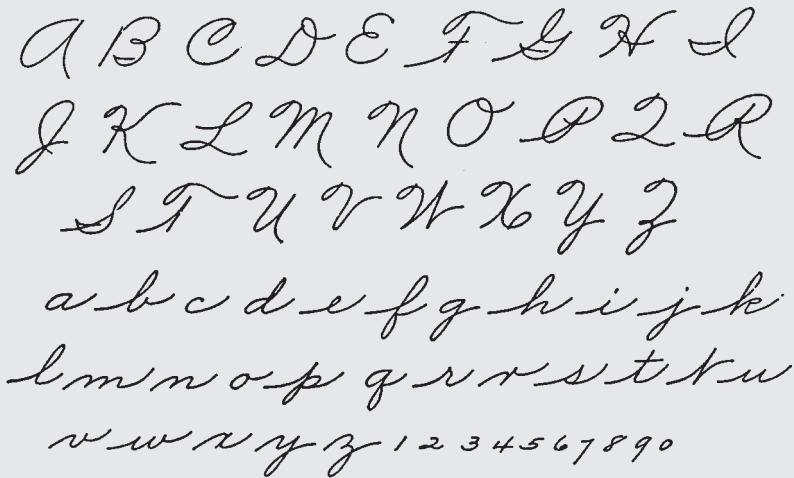
Preface	i
Acknowledgments	iii
Chapter 1: Introduction	1
Chapter 2: How Does It Work?	3
Chapter 3: Authentic Signatures	11
Chapter 4: About Forgeries	17
Chapter 5: How to Obtain Optimum Results	23
Chapter 6: Anonymous Letters	29
Chapter 7: The Expert	33
Chapter 8: Teamwork	37
Chapter 9: Court Related Issues	43
Appendix 1: Obtaining Known Writing Exemplars	53
Appendix 2: Requested Writing	55
Appendix 3: 101 Sources of Handwriting Specimens	59
Appendix 4: Confirmation Form	61
Appendix 5: Sample Fee Agreement	63
Appendix 6: Sample Fee Schedule	65
Appendix 7: Standard Written Report (Sample)	67
Appendix 8: Degrees of Certainty	69
Appendix 9: Numbers Quiz	71
Appendix 10: Answers to the Numbers Quiz	73
Appendix 11: Words Quiz	75
Appendix 12: Answers to the Words Quiz	77
Appendix 13: Twenty Questions to Qualify a Document Examiner ..	79
About the Author	81

Chapter 2

How Does It Work?

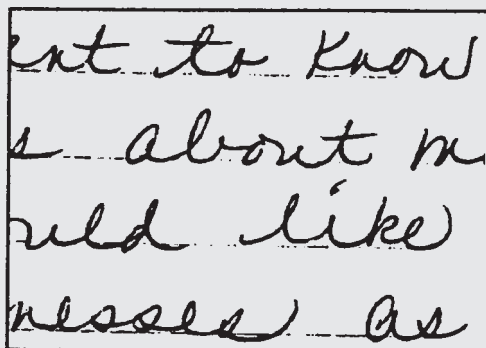
- ◆ School Model
- ◆ Common vs. Unique Features
- ◆ Handwriting Indicators–The Pie Chart
- ◆ Elements That Affect Handwriting
- ◆ Voluntary and Involuntary Features

The School Model



The starting point for any handwriting expert is the **school model**. This is exactly what it sounds like: the basic design of letters that we all learned in school, the standard that is fundamental to any writing system. Of course, there are many different school models depending on the culture or country, but the basic idea of a set standard remains the same. Still, human beings aren't machines. Some people have unique writing styles that are very different from the school model, while others stay very close to that model. Everyone's handwriting departs to some degree from the standard. It's that degree of deviation that the handwriting expert evaluates.

Female, Right-handed



ent to know
s about m
uld like
nesses as

This handwriting is almost a perfect duplication of the school model. In fact, this style of writing is called “school type writing,” which means that there is very little deviation from the standard. Yet, if you examine it closely, you will discover that there are some departures from the norm even here. These departures need to be identified and evaluated by the expert.

TIP #1

School Type Writing

In some forgery cases the “school type writing” is used as a form of disguise. Be aware of this particular style, then compare it with pre-incident writing. Watch out for extreme differences between the pre- and post- incident samples. Any inconsistencies should raise suspicions that the suspect is attempting to disguise his or her handwriting.